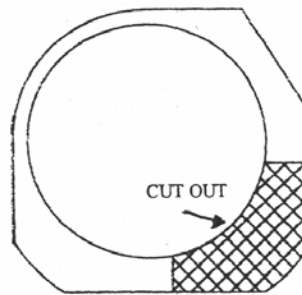
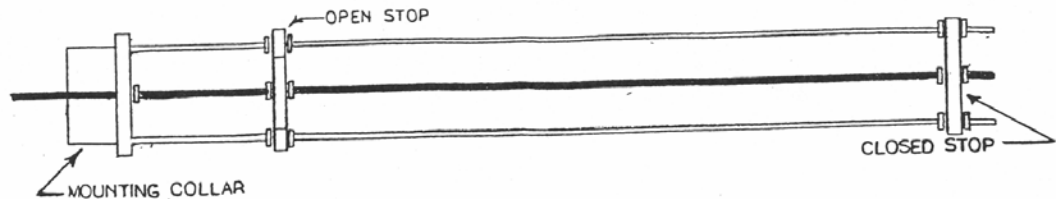


412 CONCEALED ADJUSTABLE STOP



BRITT MANUFACTURING
Jim & Karin Brittell
2824 Lynburke Rd.
Lyndonville, VT 05851

This concealed adjustable stop must be applied to the operator before the installation of the operator on the gate.

Be sure you are installing the proper stop for your operator. Stops are labeled DX and SX.

Extend the operator to near full stroke position.

Remove tube retaining clamp, and install new tube retaining clamp provided. Do not over torque screws.

Cut corner from inside plastic cover with utility knife to allow for threaded rod. See drawing above. Slide cover over tube.

Slide mounting collar over end of operator, hand tighten long threaded rod into tube retaining clamp. Secure rod by tightening nut at mounting collar until the end of the sleeve contacts the internal stop of the collar. Do not over tighten.

Adjust the stops on the gate operator by moving the hex nuts. Check again, after adjusting the stops, to be sure that all hex nuts are tight, and that the stop plates are square with the threaded rods.

Slide covers in place and attach with screws provided with operator.